

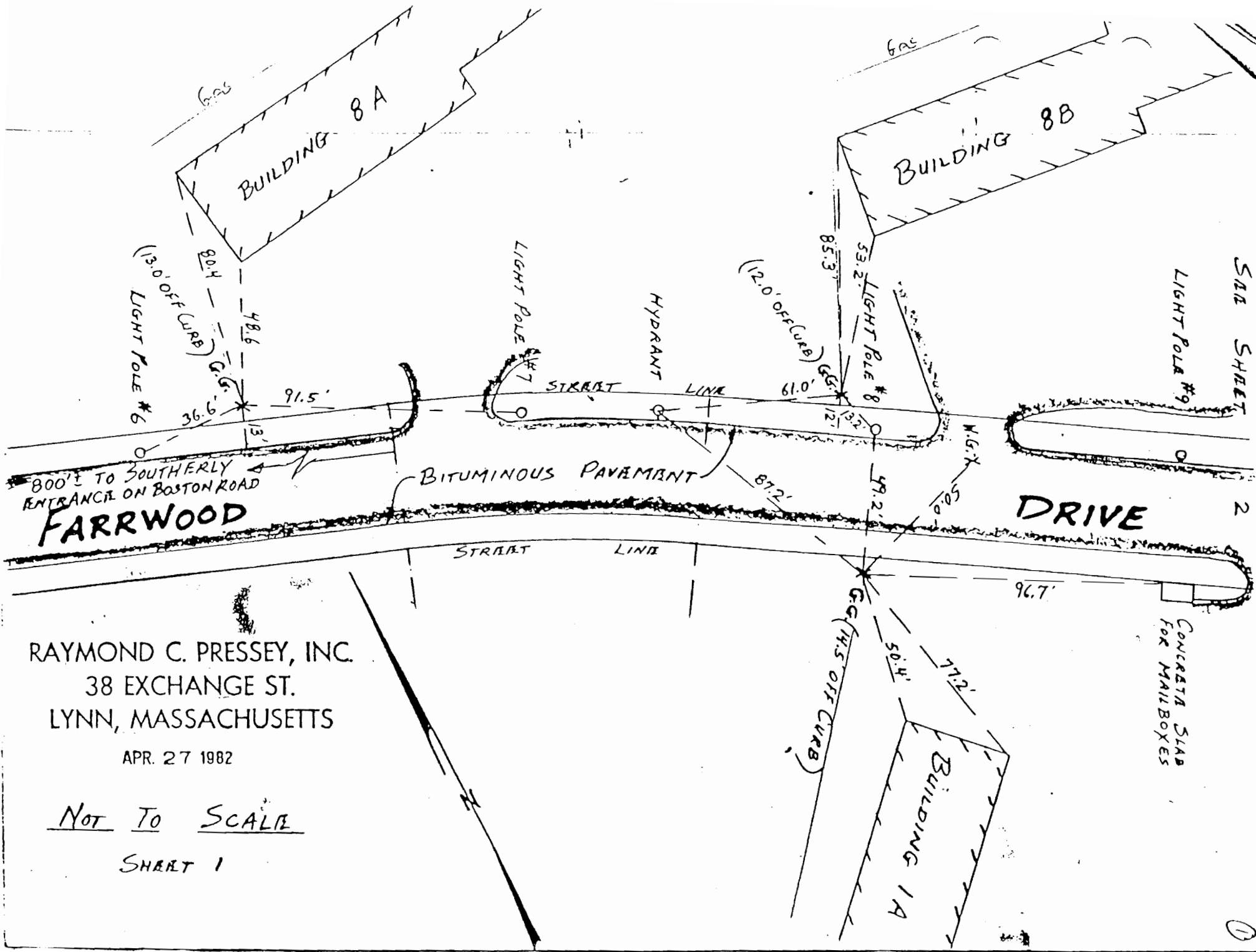
Corrected by gas Co. Ent

(Shows no location for shut off
Rear Bldg 1-H.

**TIES TO
GAS GATES
FARRWOOD DRIVE
HAVERHILL, MA.**

RAYMOND C. PRESSEY, INC.
38 EXCHANGE ST.
LYNN, MASSACHUSETTS

APR. 28 1982



RAYMOND C. PRESSEY, INC.
 38 EXCHANGE ST.
 LYNN, MASSACHUSETTS

APR. 27 1982

NOT TO SCALE

SHEET 1

SIDE SHEET

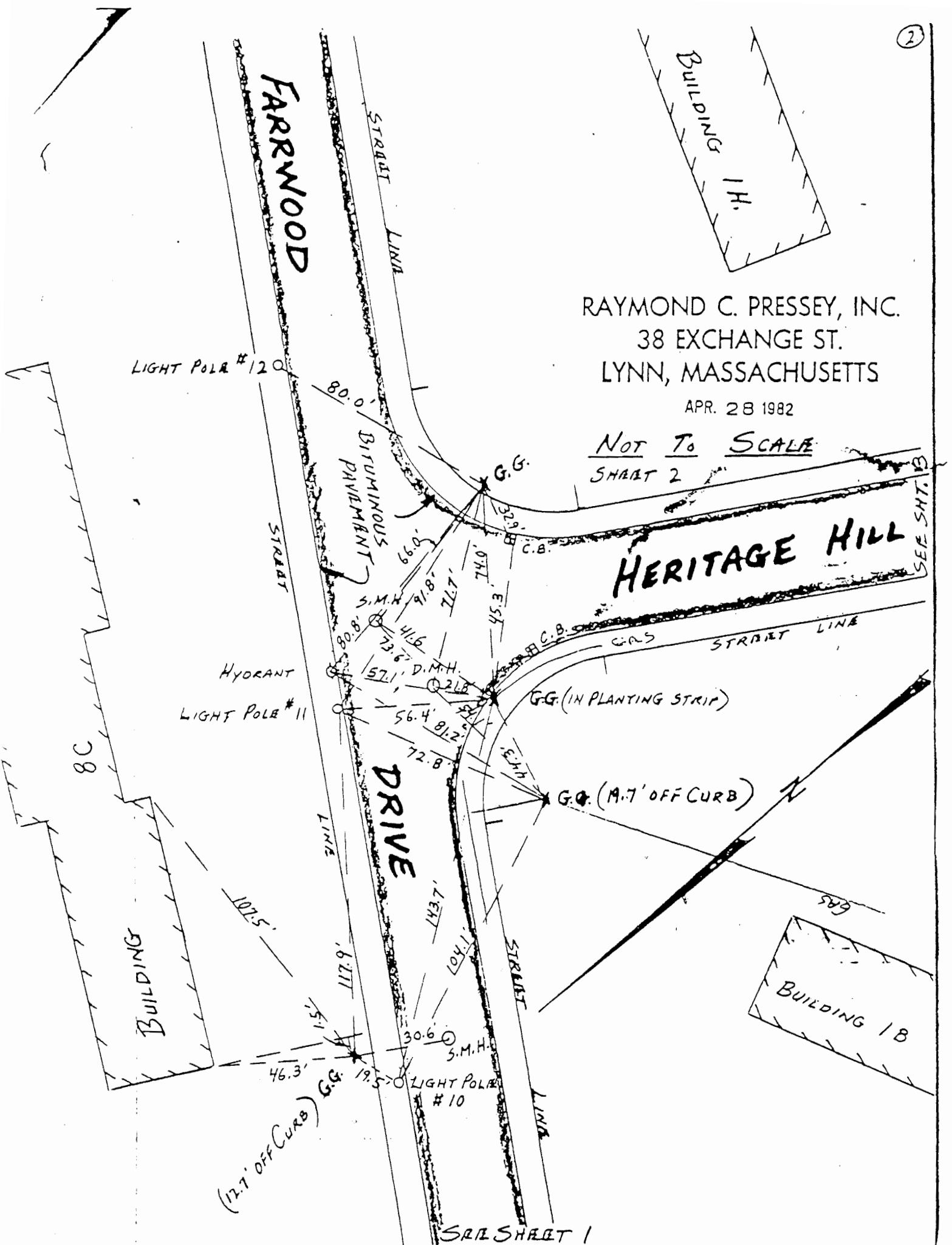
2

①

RAYMOND C. PRESSEY, INC.
38 EXCHANGE ST.
LYNN, MASSACHUSETTS

APR. 28 1982

NOT TO SCALE
SHEET 2



SEE SHEET 1

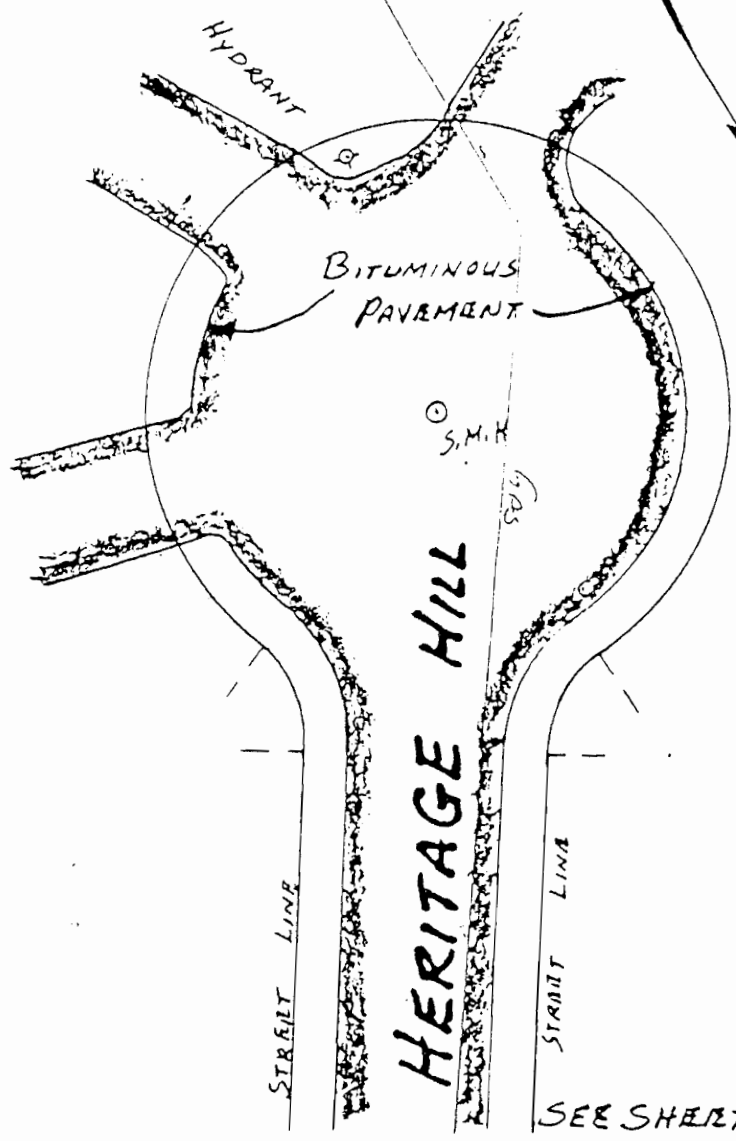
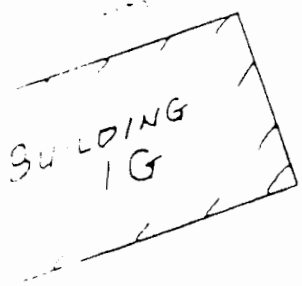
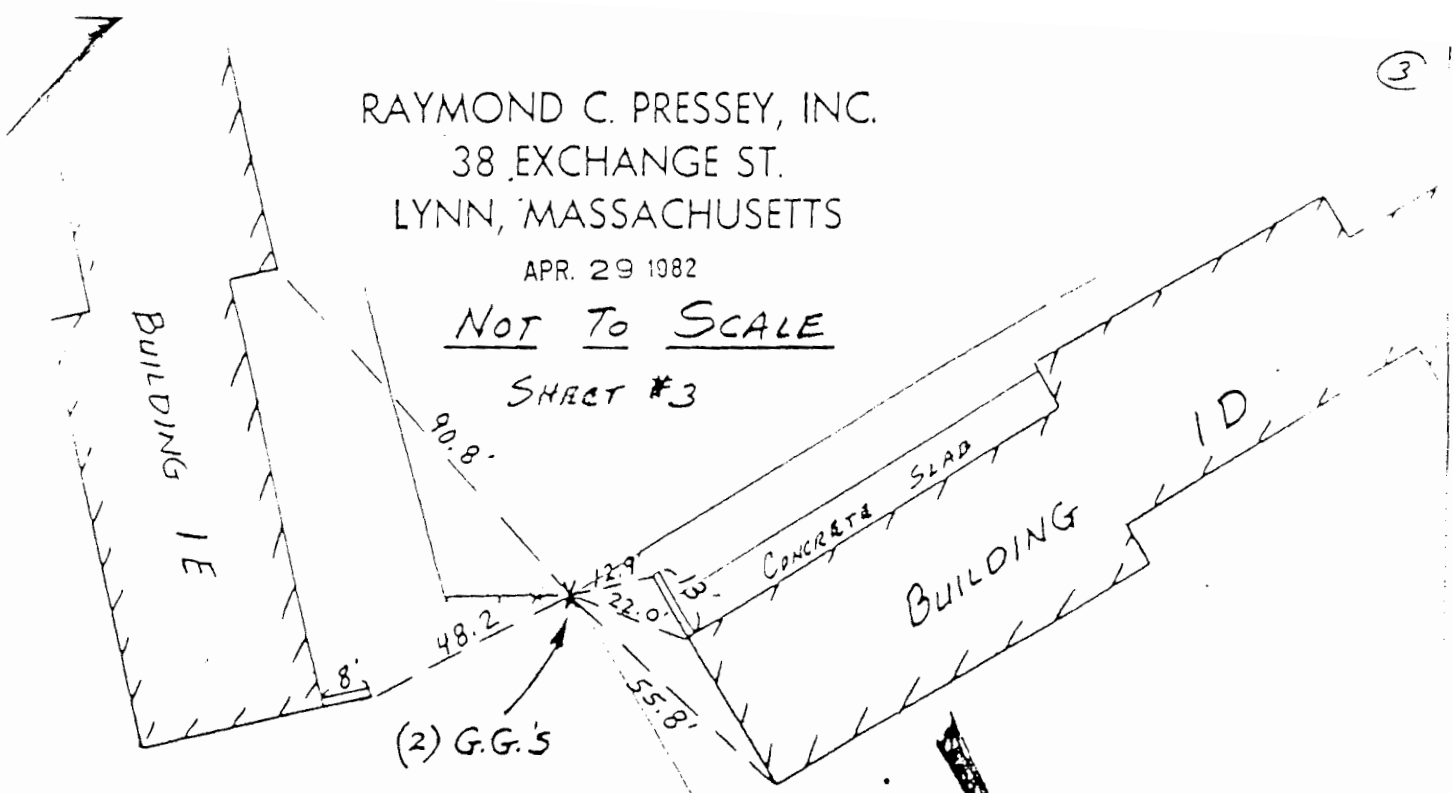
SEE SMT. 1B

RAYMOND C. PRESSEY, INC.
38 EXCHANGE ST.
LYNN, MASSACHUSETTS

APR. 29 1982

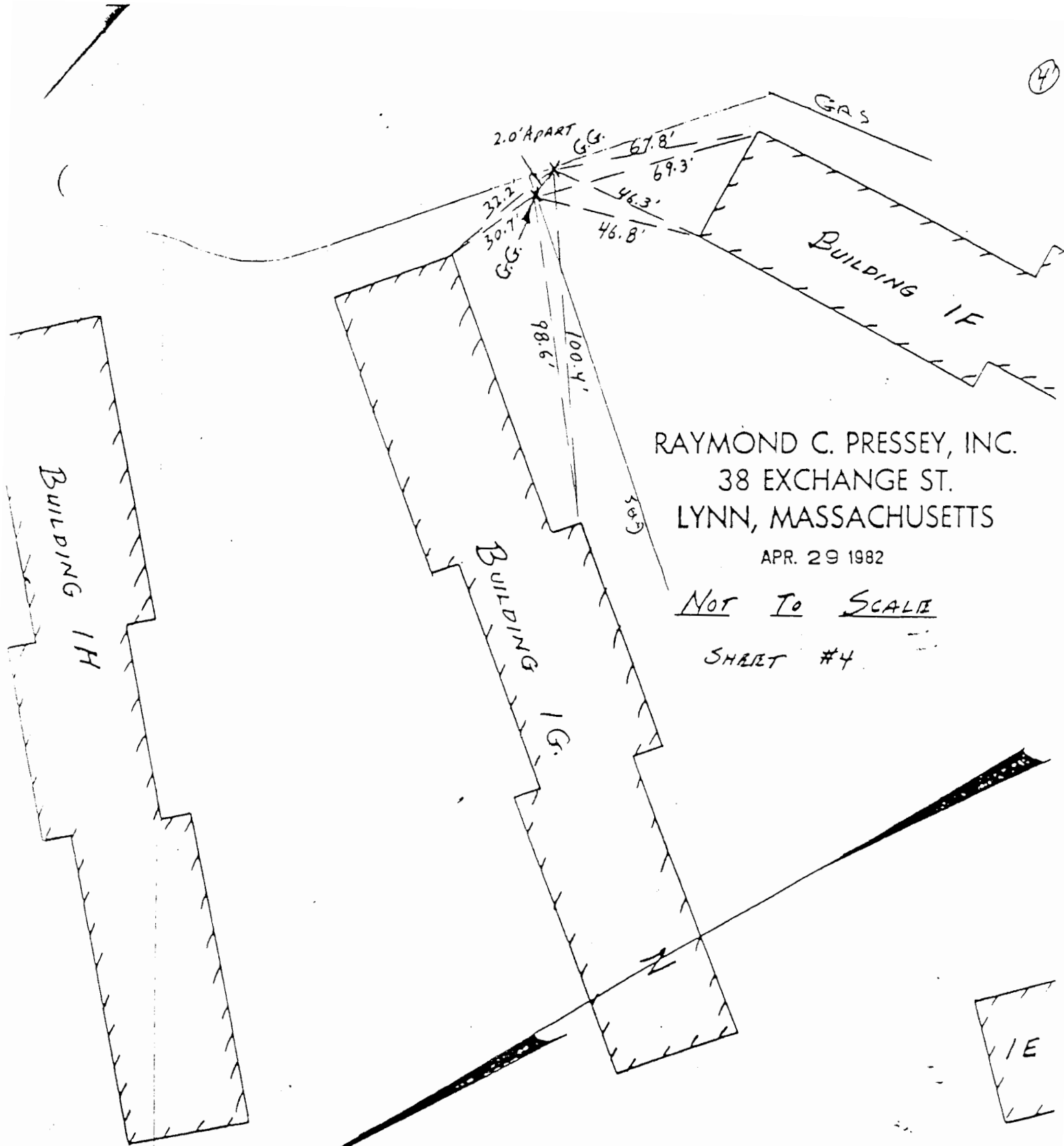
NOT TO SCALE

SHEET #3



BLDG 1-C
SERVICED BY SAME
GAS LINE AS BLDG 1-E

VIC



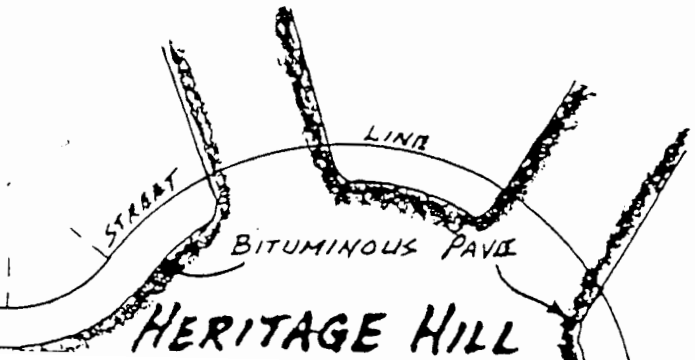
RAYMOND C. PRESSEY, INC.
 38 EXCHANGE ST.
 LYNN, MASSACHUSETTS
 APR. 29 1982

NOT TO SCALE
 SHEET #4



SEE
 SHEET
 3

SEE SHEET 2



HERITAGE HILL